



IMA PONDA CHARITABLE TRUST

DILASA

IMA PONDA HOSPICE



CENTRE FOR TERMINALLY ILL



TERMINOLOGY

- Hospice
- Terminally ill
- Beyond Cure – Need Supportive Therapy



IMA PONDA CHARITABLE TRUST

HOSPICE

Hospice care - A type of care and philosophy of care that focuses on the palliation of a chronically ill, terminally ill or seriously ill patient's pain and symptoms, and attending to their emotional and spiritual needs for comfort and quality of life, rather than cure.

- A home providing care for the sick or Terminally ill.





IMA PONDA CHARITABLE TRUST



Palliative care

- **Palliative care** is an approach that improves the quality of life of patients and their families facing the problem associated with life-threatening illness, through the prevention and relief of suffering by means of early identification and impeccable assessment and treatment of pain and other problems, physical .
- **Palliative care** is medical care that relieves pain, symptoms and stress caused by serious illnesses, improving patients' quality of life.





IMA PONDA CHARITABLE TRUST

TERMINAL ILLNESS

- **Terminal illness** is a **disease** that cannot be cured or adequately treated and that is reasonably expected to result in the death of the patient within a short period of time. This term is more commonly used for progressive **diseases** such as cancer or advanced heart **disease** than for trauma.



ARE THESE NEEDED

- Development in Medical science has meant people continue to live for longer periods, often have repeated interventions.
- In spite of all advances in Medical field , somewhere one is forced to say “ enough”
- A time comes when further aggressive treatment is not feasible.

HOW WE WILL APPROACH

- Our approach will be holistic. We shall be focusing not on dying ,but on 'living fully' whatever days are left of life.
 - Besides managing their pain, we would be treating them with meditation, yoga, laughter therapy sessions and creative activities of their choice.
- We will provide medical support even after discharge.
Readmissions are possible.

ACCEPTANCE OF MORTAL NATURE

- Adding dignity to remaining 'short ' life becomes very important.
- The right to die a dignified death.
- Realising that death is an integral part of life and not necessarily the opposite of life.

IMA PONDA

- OUR STORY

- IMA (Indian Medical Association)

Ponda is one of seven branches in Goa –

(129 Life Members

Founded on 20 April 1974

- Under Goa State IMA -(1800 Members)
- In turn under National IMA
HQ in Delhi (2.5 lakhs members)
- IMA PONDA CHARITABLE TRUST
- Formed on 21.02.2005 Has 80 G status

IMA PONDA CHARITABLE TRUST

- Has been conducting Community Health activities .
- Health Camps - Free consultations and free medicines Programs.
- Aao Gaon Chalen Abhiyan -
Adopted villages
- Continuing Medical Education Programs
- Conferences , workshops , Seminars .
-

- PURPOSE OF THE TRUST
- Arises from a conviction shared by all our members
- That one has to give back to the society that has nurtured us.
- Regularly conducting community health activities for a long time



IMA PONDA CHARITABLE TRUST COMMUNITY HEALTH PROJECT - MASTER PLAN



Phase - I

DILASA

Medical Centre
for Terminally ill

Phase - II

IMA GHAR

Administrative
Buildi with Out
Patient care &
Training Centre

Phase - III

Residential Block

Phase - IV

Auditorium



DILASA

MEDICAL CENTRE FOR TERMINALLY ILL



IMA GHAR



- MAJOR GROUND BREAKING PROJECT OF DILASA CONCEPTUALISED IN 2011
- Acquiring of land of 5,000 sq.mts from Comunidade of Bandora for a charitable project was the initiating point

WHAT PROMPTED US TO HAVE THIS PROJECT

- Nuclear family
- Increase in life expectancy with or without illness
- Rise in number of terminally ill patients, who require the care and paucity of these services in Goa
- National survey : only 0.4% get required help in terminal illness
- Our interaction with terminally ill patient & their relations

FUND RAISING EFFORTS

- Contributions from IMA Ponda members
- Donations from medical fraternity , pharmaceutical companies & well wishers
- IMA KALA UTSAV in Oct 2008 at Kala Academy Panaji
- Approaching Donors across all levels
- MP LAD Funds
- Staging of “ Lagnachi Bedi”, Konkni adaptation of the Acharya Atre Marathi Play, at Ravindra Bhavan Margao Nov 2014



IMA PONDA CHARITABLE TRUST



Phase – I



Dilasa – As on 31.11.16



DILASA – Centre for Terminally ill





DILASA – Centre for Terminally ill

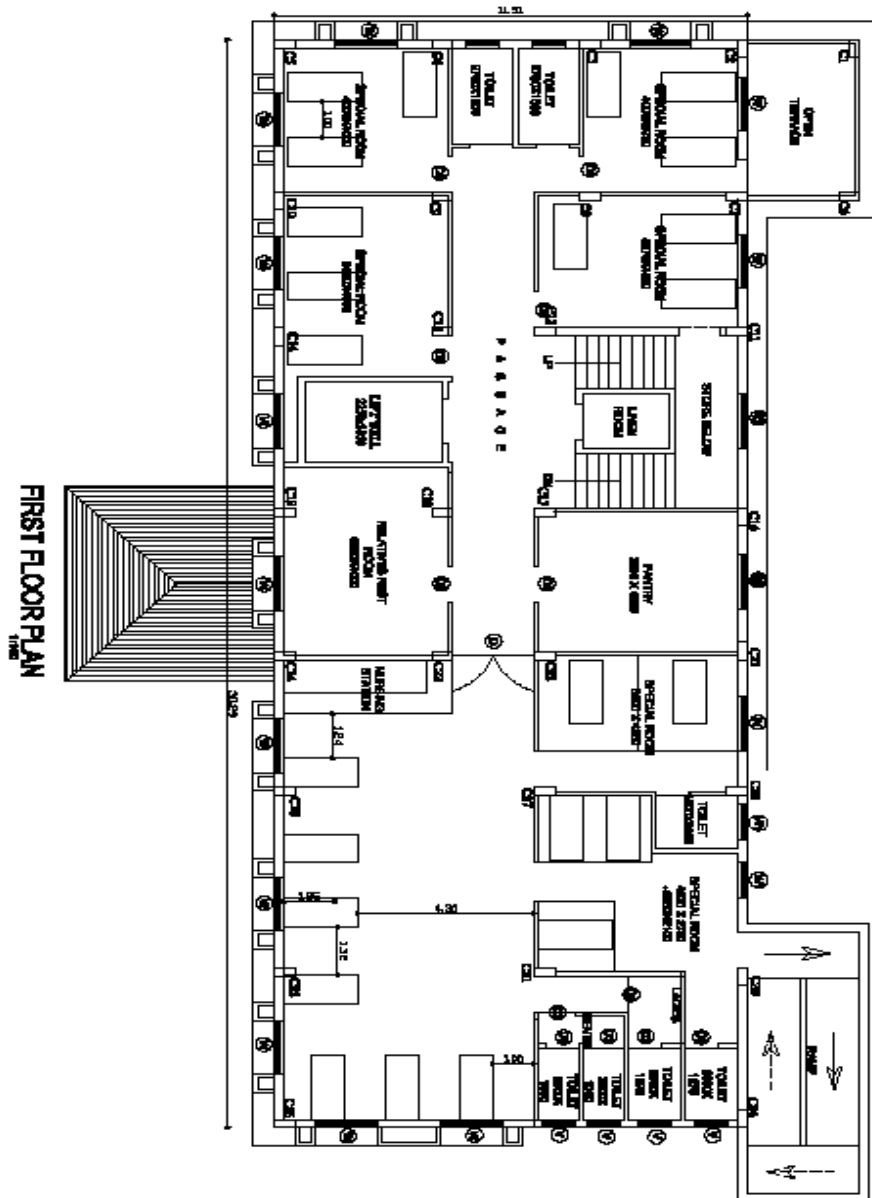
- *MANAGEMENT* -

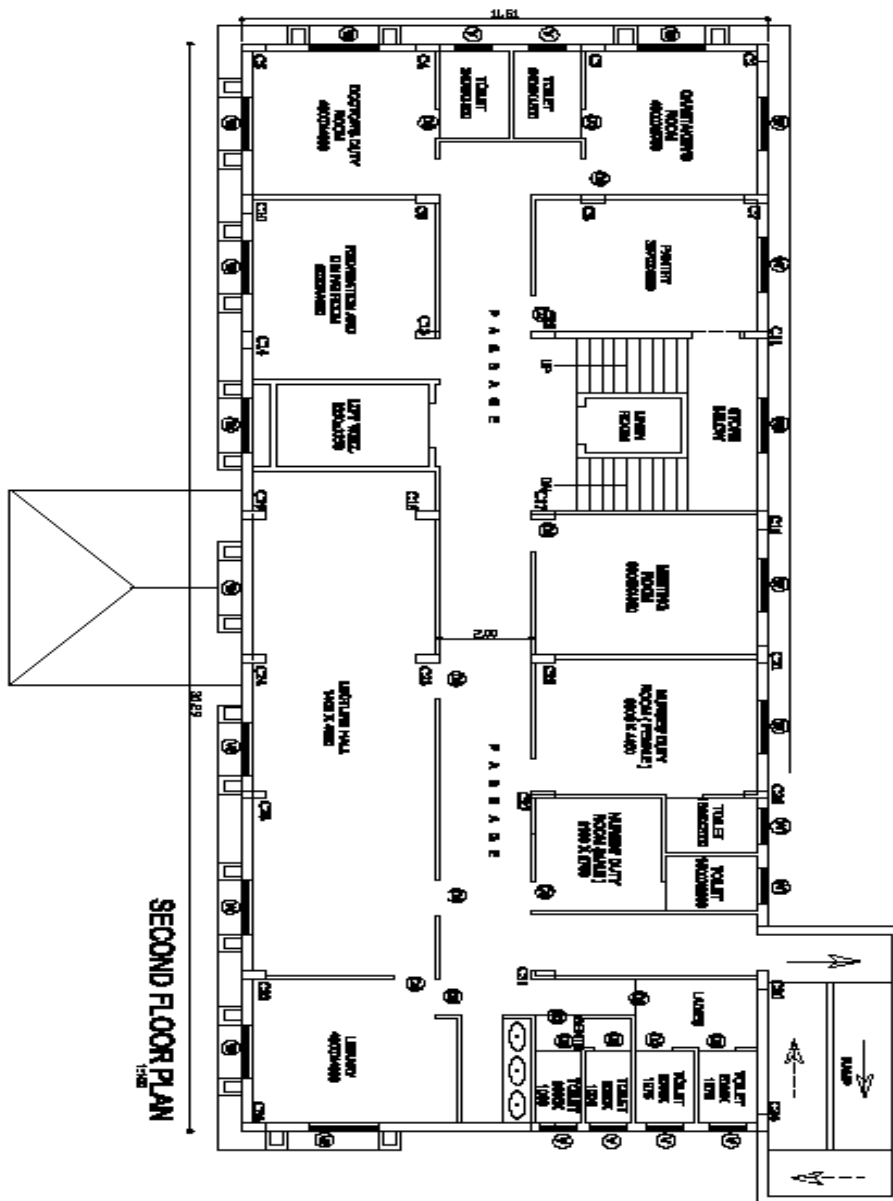
- Management by : IMA Ponda Charitable Trust
- Managing Committee for “ DILASA ”:
 - ❑ Board of Trustees – IMA Ponda Charitable Trust
 - ❑ Executive Committee – IMA Ponda
 - ❑ Co opted / Nominated member
 - ❑ Other like minded organizations with similar aims & objectives



First Floor

- General Ward - 8 beds
- 2 Pvt Rooms - 3 pts each
- 2 Pvt rooms -2 pts each
- Nursing station
- Pantry
- Relatives sit out /Rest room
- Counseling & prayer area
- Stores room





Second Floor

- Lecture Hall
- Library
- Meeting Room
- Recreation Room
- Pantry
- Doctor's Duty room
- Nurses duty rooms 2
- Superintendent's Room



DILASA – Centre for Terminally ill



- A Community Health project of IMA Ponda

PROJECT COST

- Infrastructure Cost
- Maintenance Fund
- Sinking (Contingency) Fund

3.5 Crores

1.5 Crores

1.0 Crore





DILASA – Centre for Terminally ill



SERVICES TO BE OFFERED TO INMATES

- - **Nursing Care & Doctors' services**
 - **Food and nutritional support under supervision of Dietitian**
 - **Pain management**
 - **Ancillary measures to improve quality of Life**
 - **Consumables - to be procured by relatives of inmates**
 -



DILASA – Centre for Terminally ill



■ APPROX. RUNNING COST TO INMATES

-
- Per inmate Rs.12000 to Rs 15,000 /- per month
- Monthly expenses Rs. 50 Rs 6 Lakhs .
- Deserving & Needy patients will have to be admitted with concessional charges or free .
- Admissions to be screened by Committee

STANDARD **O**PERATIVE **P**ROCEDURES (*SOPs*)



ADMINISTRATION

ADMISSION FOR INMATES

MEDICAL & NURSING SERVICES

**BASIC TRAINING IN PALLIATIVE CARE
AND PAIN MANAGEMENT**



LEGAL COMPLIANCE



- Town & Country Planning
- Village Panchayat Bandora
- Forest Department
- Fire & Emergency Services
- Irrigation Department
- Primary Health Centre – Ponda
- Directorate of Health Services
- Pollution Control Board
- Foods & Drugs Administration
- Dept. of Electricity
- Dept. of P W D

**LAYING OF FOUNDATION STONE FOR IMA GHAR & IMA-PONDA HOSPICE
BY SHRI LAXMIKANT PARSEKAR , HON. MINISTER FOR HEALTH ON 03.01.2013**





IMA PONDA CHARITABLE TRUST



CATEGORY OF DONORS

Philanthropists	Rs 25,00,000 and >	01
Patron	Rs. 10,00,000 and >	02
Pillar	Rs. 5,00,000 and >	03
Life Donor	Rs. 3,00,000 and >	05
Life Associate	Rs. 1,00,000 and >	26
Donor	Rs. 50,000 and >	25
Well Wisher	Rs. 10,000 and >	86
Yathashakti Donor...	Up to Rs 10,000	111



IMA PONDA CHARITABLE TRUST

- **SHRI NARENDRA SAWAIKER –**
HON . MEMBER OF PARLIAMENT
SOUTH GOA

SPONSOR – RS 35 LAKHS
UNDER MPLAD SCHEME



IMA NATIONAL PRESIDENT BRANCH AWARD

